

Summer Recap

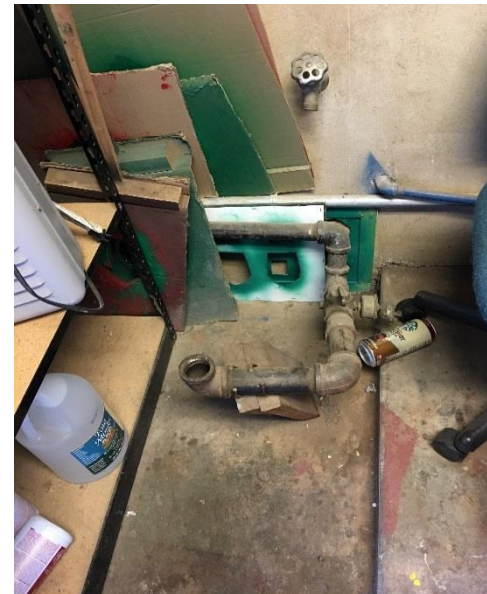
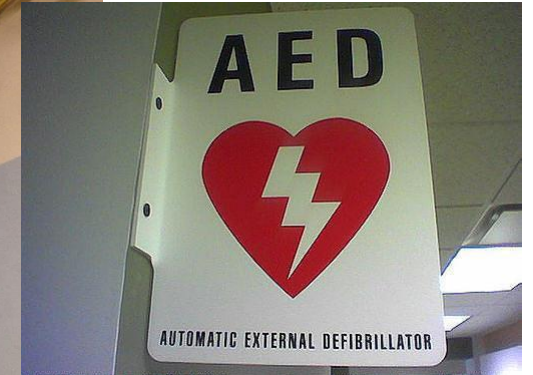
MAINTENANCE, OPERATIONS & FACILITIES

BOARD MEETING OCTOBER 27, 2016

Maintenance Work Orders

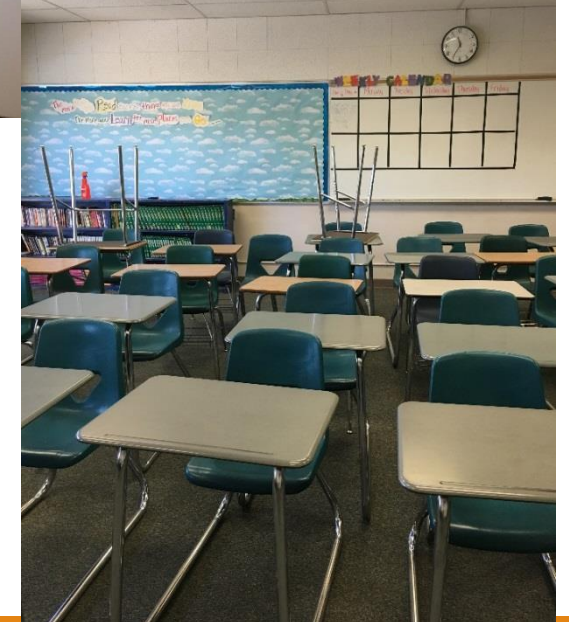
Completed over 858 work orders from the first day of summer to the first day of school by our Maintenance Staff.

- This included plumbing; lighting; A/C; electrical; painting; ramp repairs and installation of new blinds through the district.
- Repairs to sewer line at Dingle Elementary.
- Installation of AED Defibrillators throughout the district.



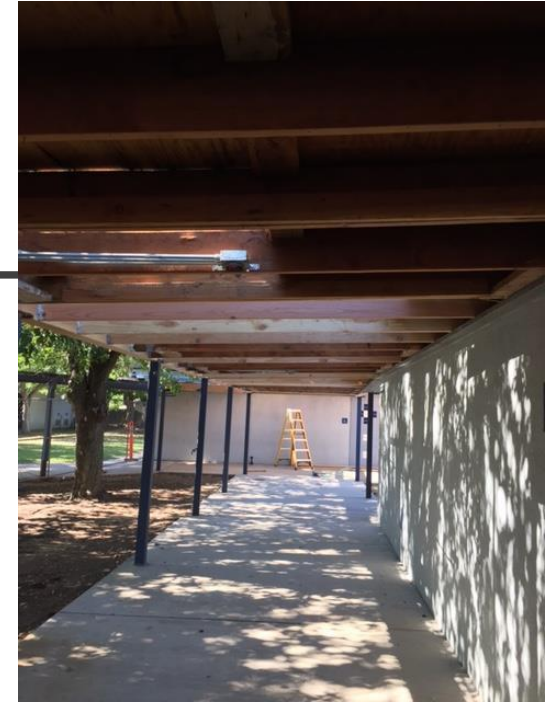
Summer Deep Cleaning

- Our custodians worked steadily to clean the interior and exterior of schools, including walls; floors; bathrooms; kitchens; and offices in all of our 550 plus classrooms.
- 2016 M&O had record success with the most waxed floors.



Woodland Prairie Summer Projects

- Two new additional classrooms.
- Canopy cover repair.
- New bike corral area.





Freeman Elementary Asphalt Renovation

- New paving under lunch areas
- Two handball courts.

Refrigeration Updates

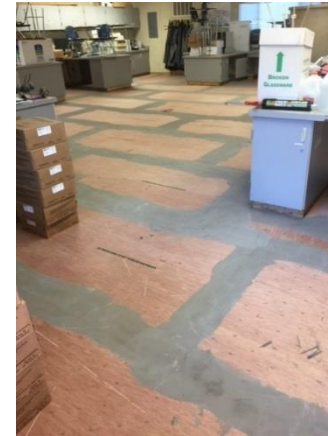
Installation of refrigeration monitoring service for Food Service Department at the following schools:

- *Lee Middle School*
- *Douglass Middle School*
- *Woodland High School*
- *Pioneer High school*
- *Tafoya Elementary*
- *Gibson Elementary*



Flooring Replacements

- Replaced flooring throughout the district.
- Carpet, tile and vinyl
- In over 20 classrooms and several sets of restrooms.

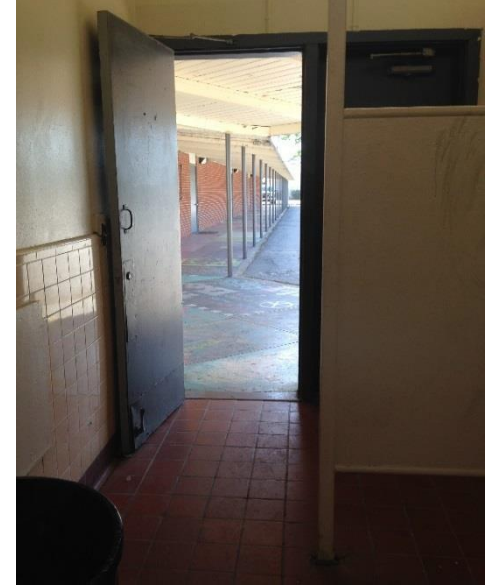


Bathroom Renovations

Plainfield Elementary



Cache Creek High School
boys bathroom
Renovation.



Campus Exteriors



Tree trimmings across the district as needed.



Irrigation updates at Whitehead Elem., Maxwell Elem., Beamer Elementary.

Gibson Elementary received a new backflow for irrigation and domestic water installation.



Additional woodchips at all elementary schools completed a couple weeks before school started.

Fire/ Security Systems



- M&O completed Fire alarm testing at 12 school sites
- Replaced fire alarm panels at Woodland High School and Gibson Elementary.
- Replaced the Public Address system at Maxwell Elementary.
- Added portable classrooms security system at Sci-Tech.



Roofing Restoration

- Cache Creek High School
- Plainfield Elementary main building
- W. Prairie Elementary K building

First Day of School Appreciation

